

Summit



Assembly Manual

Summit Assembly Manual

Thank you for your purchase of this playset.

This manual is designed to simplify the assembly process, however we recommend having an experienced carpenter involved in the project. Please read through the entire manual before starting!

Take a deep breath and get at it; the satisfaction and enjoyment of this Summit is only a few minutes away. Have fun!

You have purchased a product that consists of bulky pieces. With your purchase, you assume full responsibility to have the necessary manpower available to assemble the product. You also agree that any damage that happens to the product during the entire construction process is your responsibility, and neither the seller, nor the manufacturer, will be held liable for any such damage.

Tools Required for Job



One 4' Step
Ladder



25' Tape
Measure



9/16th Wrench



Cordless
Drill

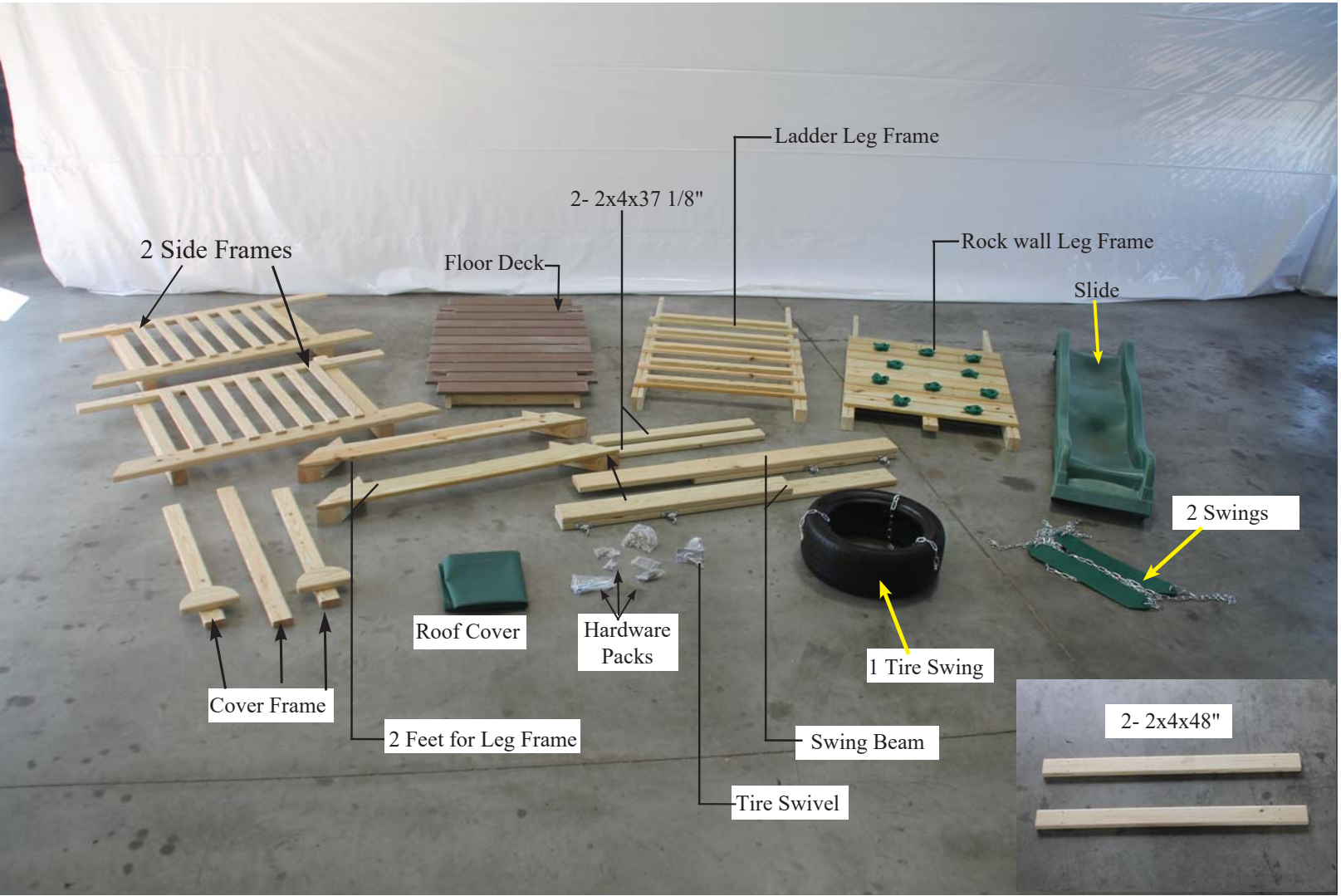


2 Square
Drive Tip
(included)



T30 Star
Drive Tip
(included)

Parts List



Step:1



Your package will look like this at the beginning.

Step:2



Identify all the parts needed to assemble the playset.

Step:3



Identify 4x4 where swing beam attaches.

Step:4



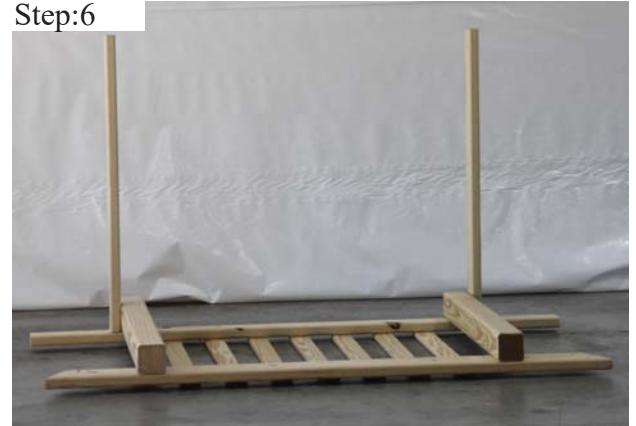
Place one side frame on level ground (2x6 with angles on both ends is part of the floor).

Step:5



Fasten 2x4x37 1/8" to 4x4 where swing beam attaches with two 5/16x2.5" star head lag screws. Be sure 2x4's are aligned top and bottom.

Step:6



Repeat step 5 on opposite side.

Step:7



Position floor deck on side panel. Bottom of decking should be resting on top side of angled 2x6.

Step:8



Fasten floor deck to 4x4 using two 5/16x 2.5" star head lag screws. Be sure decking is pulled down against angled 2x6 before fastening with lags. Fasten joist at both 4x4's. Fasten where the yellow arrows are pointing.

Step:9



Fit other side panel into position.

Step:10



Fasten this side repeating step 8.

Step:11



Fasten 2x4 to side frame using two 5/16x 2.5" star head lag screws.

Step:12



Be sure 2x4's are properly aligned. Make sure everything is pulled together. This is important for the swing beam attachment.

Step:13



Repeat step 11 on opposite side.

Step:14



Your assembly to this point should look like this.

Step:15



Fasten 2x4x48" with four 2.5" screws. Center holes on 48" 2x4 with the side panel 2x4's.

Step:16



Repeat step 15 at four corners.

Step:17



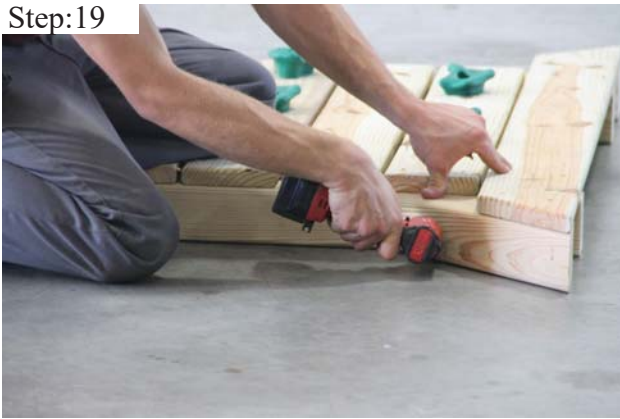
Identify rock wall leg frame and one foot for leg frame.

Step:18



Attach foot to bottom of rock wall leg frame using four 2" screws.

Step:19



Complete fastening foot to rock wall by fastening 4x4 brace to side of leg using 5/16x2.5" star head lag screws.

Step: 20



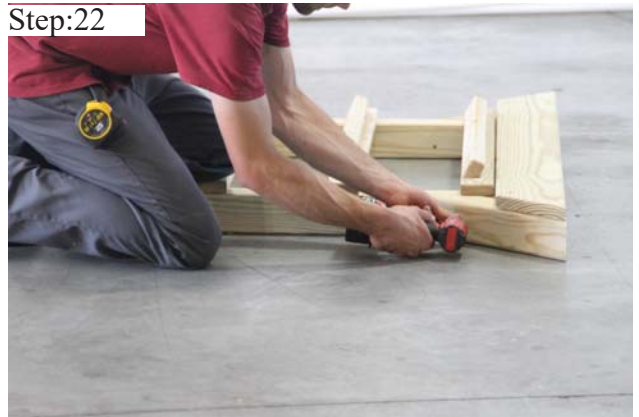
Identify ladder leg frame and one foot for leg frame.

Step:21



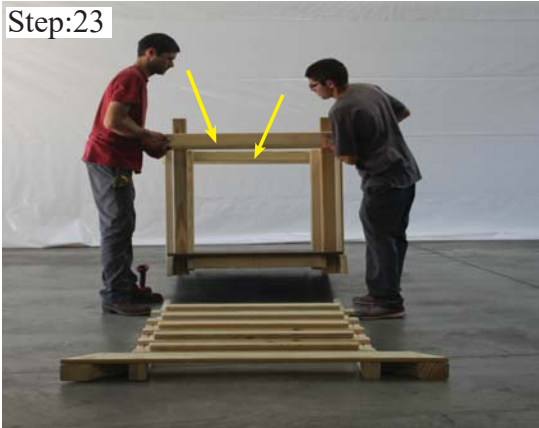
Attach foot to bottom of leg frame using four 2" screws.

Step:22



Complete fastening foot to ladder leg frame by fastening 4x4 brace to side of leg using 5/16x2.5" star head lag screws.

Step:23



You are now ready to attach leg frames to completed platform assembly. Be sure to attach ladder leg to side with longer 4x4 posts.

Step:24



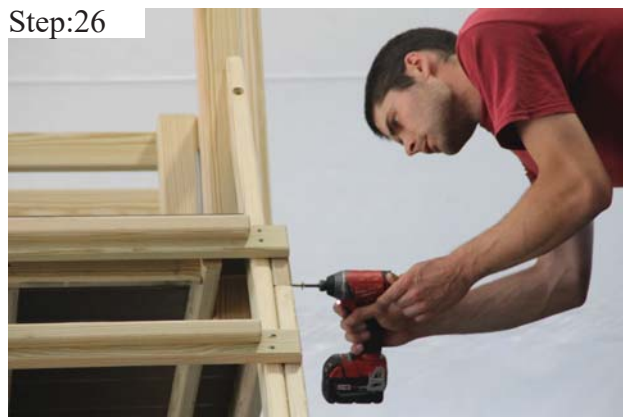
Begin lifting platform and leg frame as shown.

Step:25



Continue lifting until you can properly align angled 2x6 on floor assembly with this point on the leg frame assembly. Begin fastening long point of leg frame to tower using 5/16x2.5" star head lag screws. Repeat on opposite side.

Step:26



Complete fastening leg frame to tower using two 5/16x2.5" star head lag screws in pre-drilled holes on angled 2x6. Repeat this step on opposite side.

Step:27



You are now ready to fasten the rock wall leg frame to the tower.

Step:28



Begin lifting platform and rock wall leg frame as shown.

Step:29



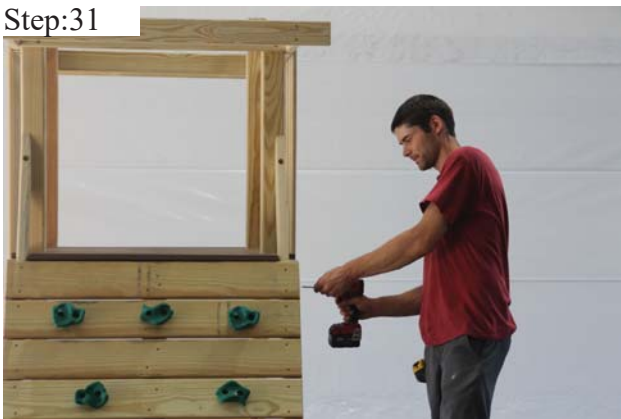
Continue lifting until bottom of decking rests properly on rock wall.

Step:30



Before fastening be sure these align properly. Fasten both points with 5/16x2.5" star head lag screws.

Step:31



Complete fastening rock wall leg frame to tower using 5/16x2.5" star head lag screws in pre-drilled holes.

Step:32



Your tower should now look like this. Check over complete assembly to be sure that all pre-drilled holes have a fastener in them. This is VERY important!

Step:33



Identify two parts for swing beam. Overlap as shown in photo with swing bearings in same direction.

Step:34



Be sure 2x6's are flush on bottom side before assembling.

Step:35



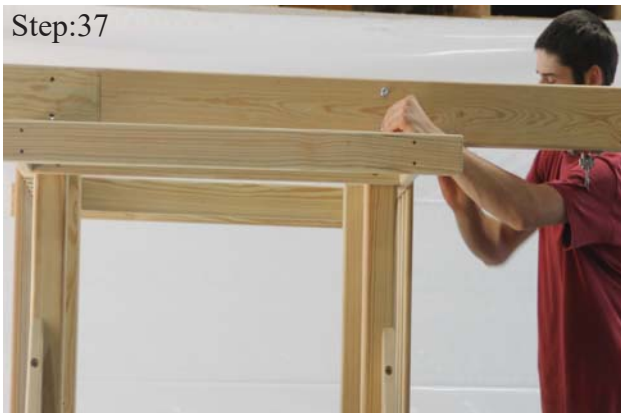
Assemble swing beam using eight 2.5" screws.

Step:36



Position swing beam on front side of 4x4's that swing beam attaches to. Make sure to align pre-drilled holes.

Step:37



Fasten swing beam to 4x4's using four 3/8"x6.5" carriage bolts (bolt head should be on the inside and the nut on the outside).

Step:38



Finger tighten until four bolts are in. Complete fastening swing beam to 4x4's by tightening all four nuts with wrench.

Step:39



Identify three parts for cover frame. Be sure half moons are facing outward before assembling.

Step:40



Assemble cover frame using 2.5" screws. Center pre-drilled holes on top of upright 2x4's.

Step:41



Place cover frame on tower, centered between 4x4's.

Step:42



Fasten assembled cover frame to tower using pre-drilled holes. Use four 2.5" screws on each side.

Step:43



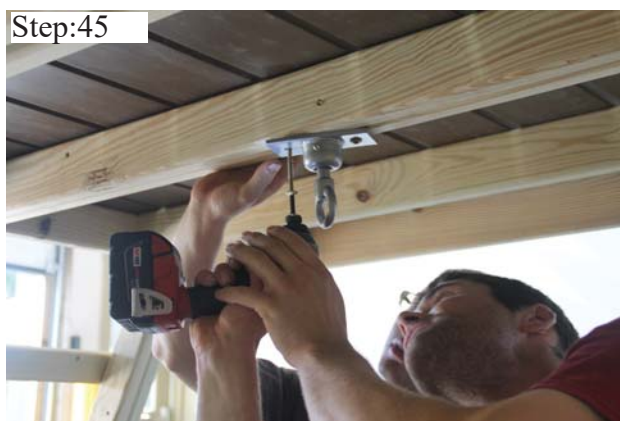
You are now ready to attach the cover to the 2x4x48" using 3/4" pan head screws. Be sure your corner is flush with the end of the 2x4. Keep cover pulled snug at all times.

Step:44



Repeat step 43 on opposite side.

Step:45



Fasten tire swivel to double 2x4 floor joist with 3" lags in pre-drilled holes.

Step:46



Attach tire swing to tire swivel using pear-shaped quick link. Use standard automotive grease to lubricate the swivel.

Step:47



Position slide on top of deck floor. Slide should overlap floor 1-2".

Step:48



Fasten slide on top of floor using 2" screws.
Do not over-tighten.

Step:49



Hang swings on swing bearings at
desired height.

Step:50



Anchor tower to the ground using the metal
anchors provided. Use one anchor on each corner.
Fasten the anchors to the playset using 1.5" lags.